

SHEET NUMBER

SHEET NAME  
SOUTH POD -  
FLOOR PLAN

REVISIONS  
AS BUILT'S

ISSUE  
10/07/92

CHECKED  
GAB

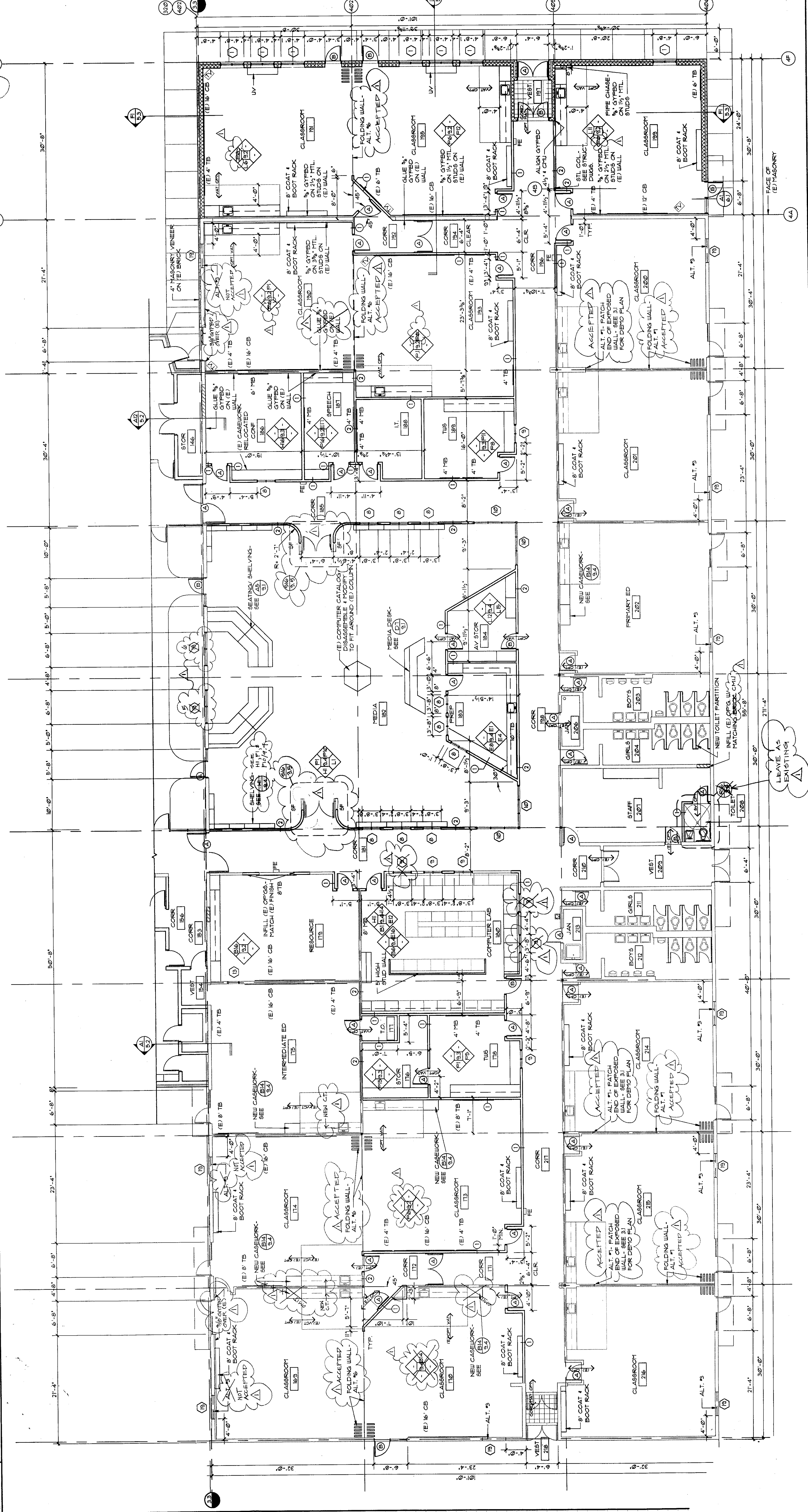
DRAWN  
K-H/KGL

JOB NUMBER  
913

**RBB**

POUDRE SCHOOL DISTRICT R-1  
CACHE LA POUDRE ELEMENTARY  
ADDITION & REMODEL  
FT. COLLINS, COLORADO

R1	130, 131	R5	121	R9	141, 142	R13	155	R16	208
1/4"-1'-0"	1/4"-1'-0"	1/4"-1'-0"	1/4"-1'-0"	1/4"-1'-0"	1/4"-1'-0"	1/4"-1'-0"	1/4"-1'-0"	1/4"-1'-0"	1/4"-1'-0"



**GENERAL NOTES**

- ALL DIMENSIONS SHOWN ARE TO FACE OF GYFBD.
- WALLS ARE CENTERED ON GRID, UNO.
- SEE 91 FOR TOILET ACCESSORIES DESIGNATIONS.
- REPAIR ALL (E) WALLS DAMAGED DURING DEMOLITION OR NEW CONSTRUCTION. VOIDS CREATED IN WALLS SHALL BE REPAIRED TO MATCH EXISTING FINISH.
- PROTECT EXISTING WORK AND DIMENSIONS PRIOR TO COMMENCING WORK.
- PROTECT (E) MATERIALS THAT ARE GENERAL ED TO REMAIN.
- ALL (E) FLOORS RECEIVING NEW FLOOR SHALL BE PREPARED, REPAIRED AND CLEANED AS REQUIRED TO ACCEPT NEW MATERIAL.
- REPAIR AND CLEAN ALL EXPOSED CONCRETE SURFACES TO BE FILLED W/ LEVELING COMPOUND AS REQUIRED.
- HERE ELEVATIONS FOR CONTROL JOINTS IN MASONRY.
- PATCH (E) GYFBD AT ALL WALLS, WINDOWS & DOORS HAVE BEEN RELOCATED.

**WALL TYPES**

- 1/2" GYFBD ON 3/4" PTL STUDS
- 3/4" GYFBD ON 1" PTL STUDS
- 8" CHU, UNO.

THIS RECORD DRAWING HAS BEEN PREPARED BY THE ARCHITECT BASED UPON INFORMATION FURNISHED BY THE DESIGN PROFESSIONAL. THE ARCHITECT IS NOT RESPONSIBLE FOR THE ACCURACY OF THESE CONDITIONS WHICH MAY HAVE BEEN REVISED, AMENDED, OR OTHERWISE CHANGED SINCE THE DATE OF THIS RECORD DRAWING. THE ARCHITECT IS NOT RESPONSIBLE FOR THE ACCURACY OF THE INFORMATION FURNISHED BY THE DESIGN PROFESSIONAL.

